

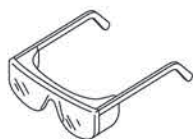
Installation Guide



- Risk of personal injury. Product can break, chip, and cause injury if handled carelessly. Get help lifting the sink.
- When possible, cut the hole in the countertop before installing the countertop.
- Do not use plumbers putty, as plumbers putty will stain natural stone. Use only clear, 100% silicone sealant for this installation.

CAUTION

RELATIVE TOOLS



• Safety goggles



• Pencil



• Scissors



• Hand drill



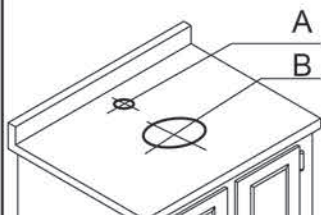
• Rag



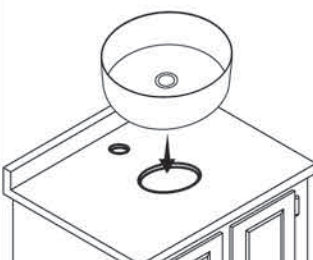
• Sealant

100% Clear Silicone Sealant

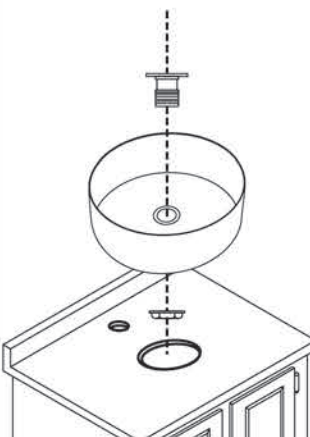
01 Make sure the diameter of A is 35 mm, and the center of A is at less 55 mm to the water bar. The diameter of B should be 100mm, and make the center of it according to the size of the basin.



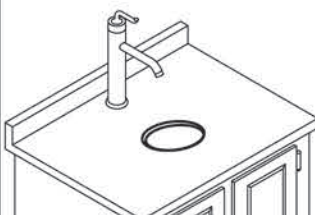
02 Position the sink in the cutout. Adjust the opening to fit. Remove the basin.



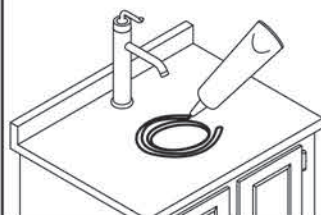
03 Use clear, 100% silicone sealant, not plumbers putty, to install the drain.



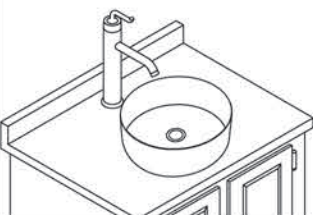
04 Install the faucet according to the faucet installation instructions.



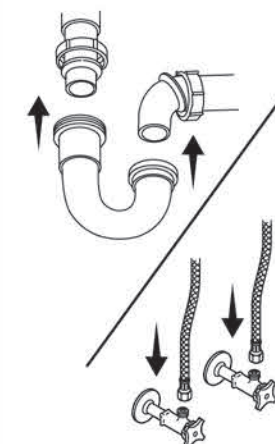
05 Apply clear, 100% silicone sealant around the cutout.



06 Position the sink in the cutout. Wipe away excess sealant.



07 Complete the faucet and drain connections.



08 Run water and check for leaks.

